



Supplies Needed for Snowman Hoop

Fabrics Needed:

Background – 12" x 12" fabric piece (blue/green)

Hanger – 2" x 10-1/2" fabric piece (shown in same fabric as background, or you can use ribbon or twine, etc.)

Head & Body – fat qtr or 1/4 yd (white background with gray dots)

Hat – 2-1/2" x 5" fabric scrap (black)

Hat band – 3/4" x 4" fabric scrap (red and white 1/8" stripe)

Carrot nose – 1" x 3" fabric scrap (orange)

Scarf – 4-1/2" x 11" fabric scrap (green)

Snowflakes – scraps (white felt with sparkles or pom poms would be cute)

Miscellaneous Items:

Wooden embroidery hoop 9"

Heat 'n Bond (Lite) – iron-on adhesive 7" x 12" piece

Buttons – eight 1/8" for eyes and smile (black). Two 1/2" for body (green)

Threads to match fabrics

Disappearing marker

Glue – I prefer Aleene's Tacky Glue, it's thick and dries quickly

Have on hand: scissors, ruler or measuring tape, hand sewing needle, straight pins, iron and sewing machine.

Instructions to make Snowman Hoop

** follow steps 1 thru 4 below and set pieces aside*

1. Cut a 12" x 12" square from background fabric and press. **Cut snowflake pieces from felt.**

2. Hanger – using template given cut a piece of fabric. At each end fold over a 3/8" hem, wrong sides together and press. Fold in half lengthwise, wrong sides together and press. Open and fold each side to the center fold line and press. Fold in half again along center fold line and press. The hanger will now be approximately 1/2" wide and 9-1/4" long. Sew close to edges along both sides and ends of hanger.

3. Scarf – for this piece we will use the trace and sew on the line method: Cut a piece of fabric 4-1/2" x 11". Fold fabric in half lengthwise with right sides together and press. It should now measure 2-1/4 x 11". Center template on the fabric. Trace against edges of template all the way around. Sew directly on the line you just drew except don't sew around the opening. Cut away fabric outside of your stitching leaving a generous 1/8" seam. Cut directly on lines around opening. Turn and press. Turn seam allowances inside opening and press again. Stitch opening closed.

4. Appliques – head, body, hat, hat band and nose. *Note - the nose has been reversed so when it is ironed onto the head it will be facing the same direction as the sample snowman.*

Trace templates on the paper side of the fusible web. Cut out the pieces leaving approximately 1/4" around the shapes. Iron the fusible web pieces, paper side up, onto the wrong side of the fabrics following manufacturers directions. Let cool. Cut pieces out directly on the tracing lines. Mark placements for the buttons and nose on the front of the fabric with disappearing marker, holding against a sunny window helps.

Continued on page 2

5. Prepare the background fabric & apply the appliques

Note before you begin, this snowman is not centered, he's just to the left a bit. If you would like yours centered it will be a little easier to make. So instead of making 2 lines, just make a center line and position appliques lined up with that line. Adjust snowflakes around accordingly and let the ends of the scarf hang past the hoop.

Follow diagrams and instructions on page 4 to draw the lines and trace around hoop. Peel papers from backs of appliques. Iron on appliques in this order: Body, head, hat, hat band and last the nose. Stop and sew around all sides close to edges of each piece using matching thread before applying the next piece. Feel free to play with the head, hat or nose tilting them, etc.

6. Buttons – I like to put a tad of glue under buttons and let it dry before stitching them on. Use white thread for eyes and black for smile. For buttons on body you can use matching thread or a different color. Take the needle in the front of the button to the back and out the front again leaving tails of thread and tie in a knot.

7. Snowflakes – position them to your liking and using white thread take one long stitch in the center of each one.

8. Hooping – have the picture of the snowman handy. Adjust your fabric between the two rings tightening it as you go, stretching the fabric taut. Bring the fabric to the back and using a bead of glue to secure, work your way around making sure the fabric is still stretched taut in the hoop. Once the glue is dry use scissors to trim the excess fabric off the back.

9. Scarf – tie in a soft knot in the center. Play with positioning and then coming from the back of hoop take some hidden stitches to secure, or you can use dabs of glue instead. Slip **hanger** through opening in top of hoop and make a loose knot, see picture. *Enjoy♥*

Cotton Ginnys

Copyright 2018, Cynthia Rose
patterns@cottonginnys.com



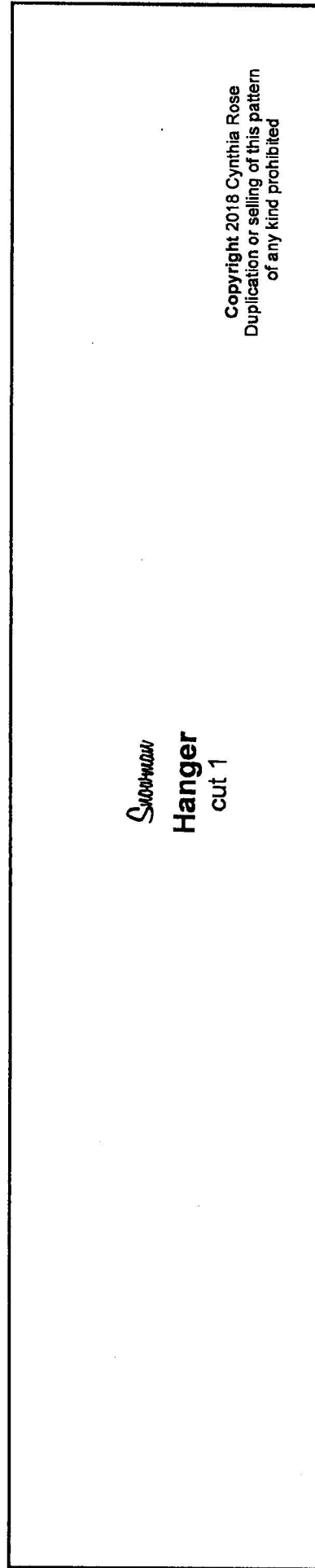
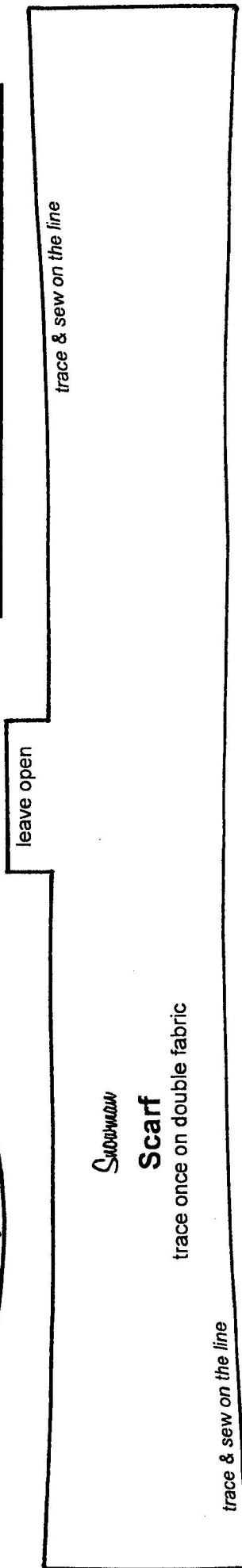
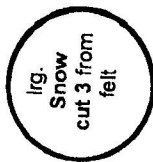
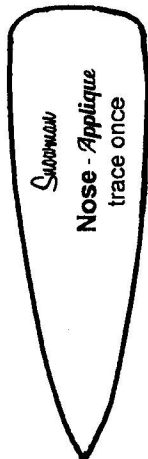
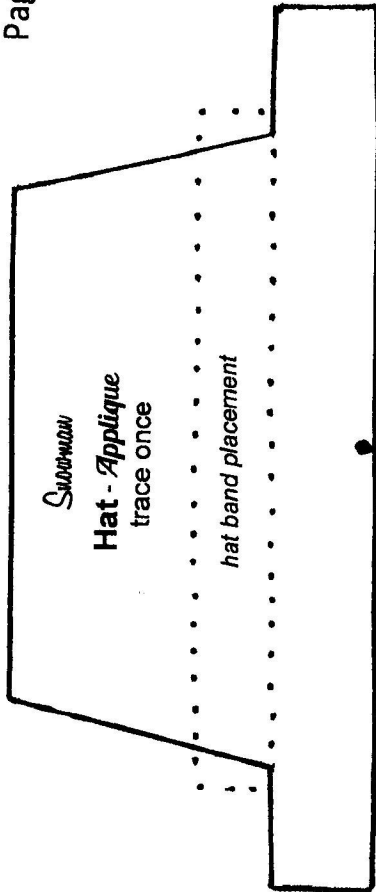
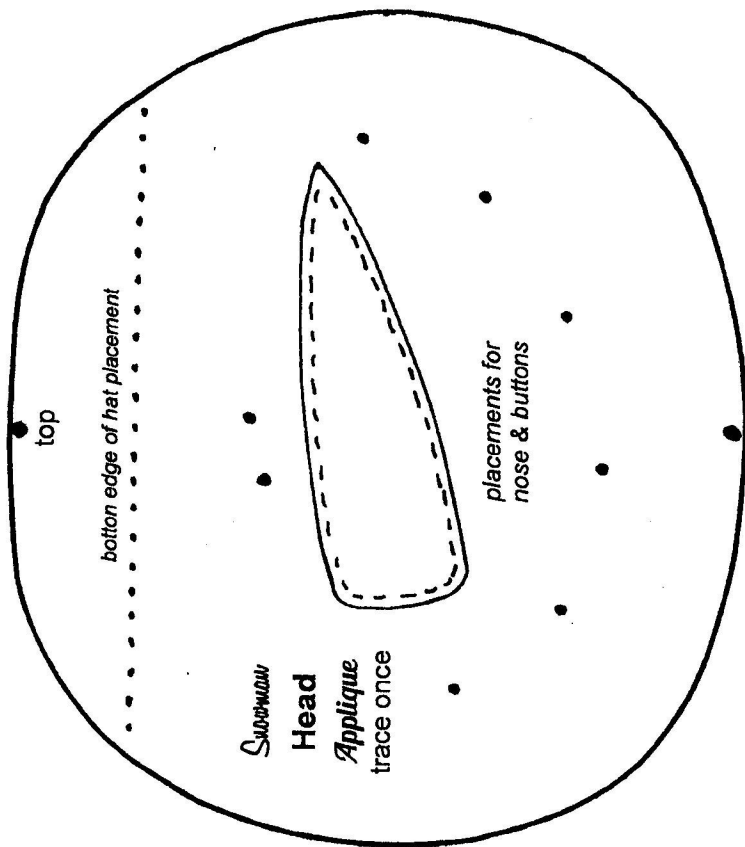


Diagram A

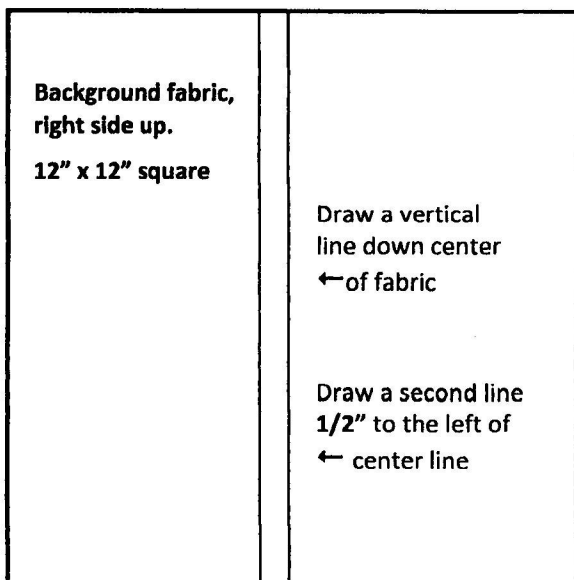
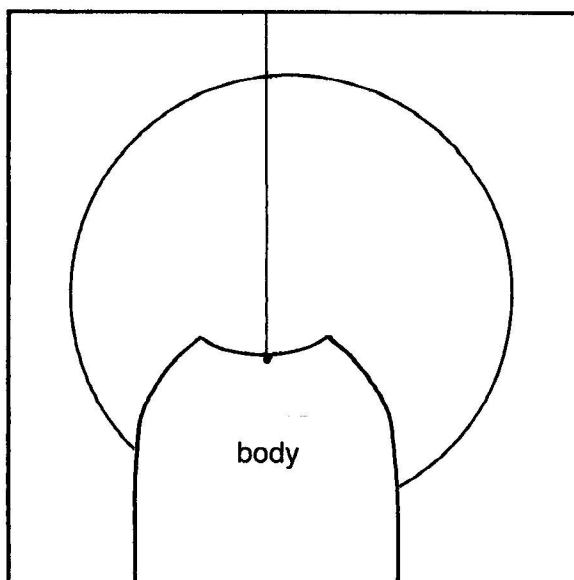


Diagram B

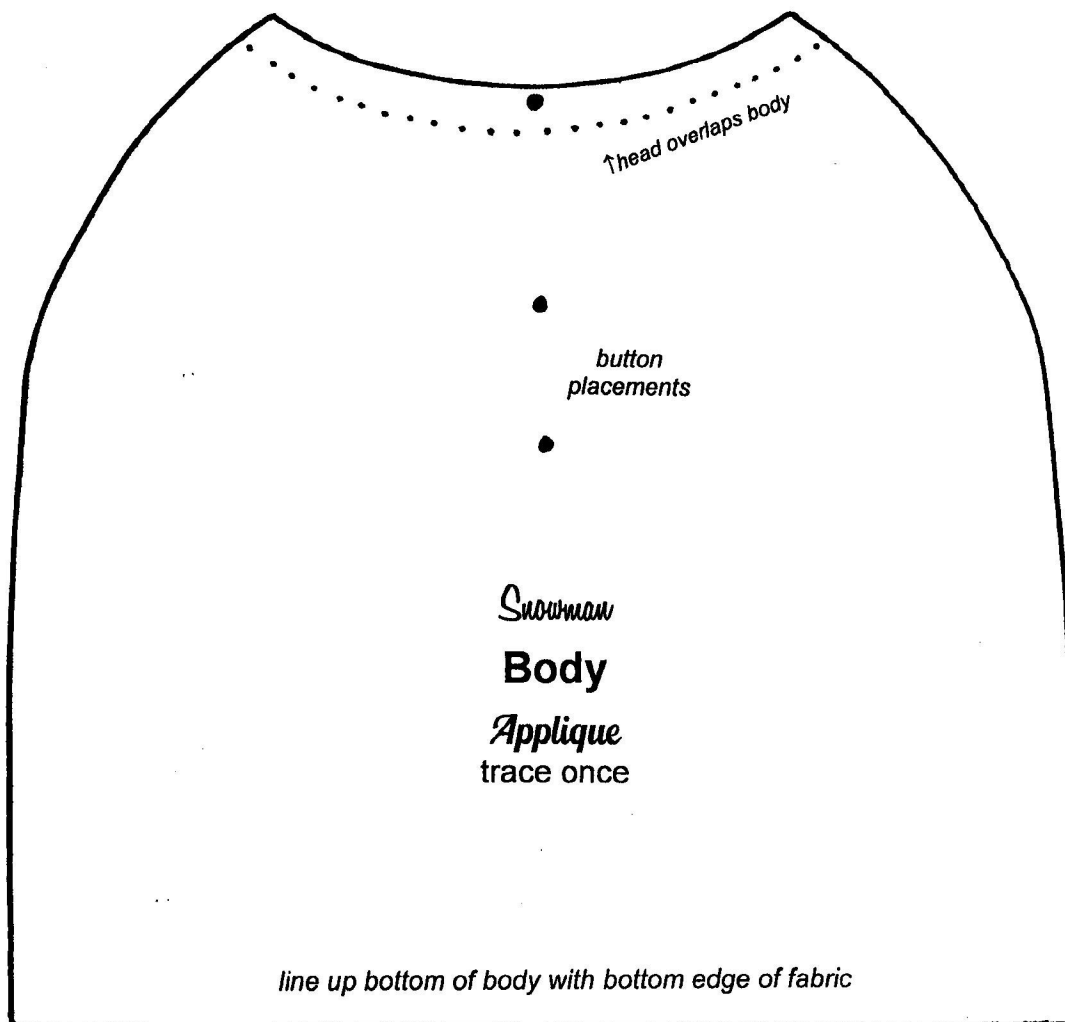
** diagrams are not to scale*



← Center inner
hoop on the
fabric and on the
center line. Trace
around outer
edge of hoop.
Remove hoop.

Note - the center
line has been
removed from the
diagram so the
snowman body
will show more
clearly.

Position the body applique right side up on the fabric
with bottom raw edge lining up with bottom edge of
fabric and center of body lining up with the left side
line. Fuse to fabric. *Return back to instructions.*



Copyright 2018 Cynthia Rose
Duplication or selling of this pattern
of any kind prohibited